

Harton Technology College, South Tyneside

Harton Technology College is centred on what used to be a boys' grammar school. Tradition has been preserved, not only in the varnished front doors, panelled corridors and large assembly hall of the original building, but in the guiding principles of the headteacher: 'Tradition, Innovation and Excellence'. The school lives up to this credo, providing a beacon of hope and expectation in a largely disadvantaged community of white working-class families.

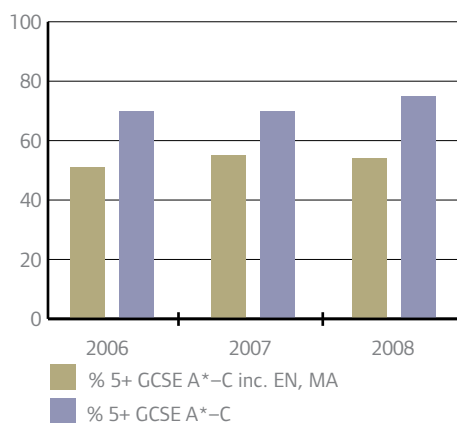
The school has avoided any of the complacency that could envelop a very stable staff, a core of whom have served in the school for most or all their careers. Ken Gibson, the headteacher, is one of these, appointed to this post five years ago having held a range of other posts in the school before becoming a deputy headteacher. He has three natural advantages: he knows the community as well as anyone, having been brought up in it; he is an inspiring leader; and he excels as a teacher. In every sense, he leads by example. His involvement, drive and vision are admired by staff, who strive to emulate these attributes. He and the governors have built a team of staff that espouse the core values and high ambitions of the school. It was already very good when Ken Gibson took over, but he has built on success by continuing to raise standards through a range of strategies, including the refined use of performance data and targets, diligent quality assurance and ensuring that the progress of all pupils is maximised and their

well-being assured. Parents flock to open evenings and the school is heavily oversubscribed.

The school has added modern foreign languages and applied learning to its original technology specialism. It has manipulated the curriculum and timetable skilfully to provide personalised provision for a high proportion of pupils while maintaining a strong group of core subjects. Rigorous internal evaluation, monitoring and improvement planning sustain the school's momentum, while some excellent strategic appointments have reinforced the focus on teaching, learning and cooperative planning. Plans are well advanced for the construction of a sixth form centre which, together with the imminent Building Schools for the Future programme, will transform the school site.

The school's five advanced skills teachers provide capacity for outreach work which finds expression in a range of supportive functions, from teaching technology in feeder primary schools to providing lead teachers across the borough in a number of subjects. The headteacher also mentors other new headteachers in the area.

School data



2007 data		Student profile
Roll:	1,365	95% White British
Age:	11-16	
CVA:	1,025	
FSM:	27.20%	
Inspection judgements and quote (Sep. 2007)		
23	Outstanding	'The headteacher and strong senior team have created very effective systems and structures for raising standards.'
3	Good	
0	Satisfactory	
0	Inadequate	